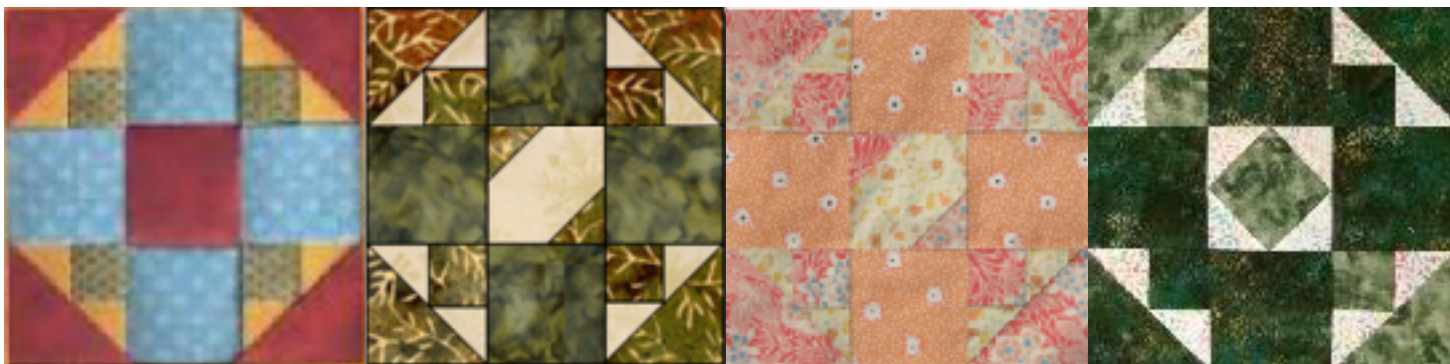


August BOM - Cedars of Lebanon



This block is traditionally done in 3 colors but 4 & 5 colors also work. Please note the different center units. You can have a solid square, snowball 2 corners, or all 4 corners (Square in a Square). I've adjusted the cutting options accordingly. Use the coloring page at the end of the directions to test ideas.

CUTTING FOR DARK GREEN BLOCK:

Dark Green - four 6.5" squares
one 8 x 3.75" rectangle
one 7.5 x 8.5" rectangle

Medium Green - one 8 x 3.75" rectangle / strip
one 7.5 x 8.5" rectangle

Light Print - two 8 x 4.75" rectangles / strips

CUTTING OPTIONS FOR CENTER SQUARE

*** If making a solid center square, cut one 6.5" square of your color choice.

*** If making a opposite corner snowball center, choose the 2 colors you want and cut the following:
Color 1- one 6.5" square (main color)
Color 2 - two 3.25" square (for snowball corners)

*** If making a center Square-in-a-Square, cut the following
medium green - one 4 & 7/8" square
light print - two 4.5" squares, cut once on diagonal

The Cedars of Lebanon block offers a chance to practice a popular unit called the Shaded 4-Patch. This is made with 2 colors. There are many variations to the unit. 2 common ones are:

Birds in the Air or Flock of Birds
with a HST in place of the square



OR Mary's Triangle
made with 3 colors



Step 1 - Shaded 4-Patch

You will need the dark green 8 x 3.75" strip, the light print 8 x 4.75" strip, and the dark green 7.5 x 8.5" rectangle.

** The color you choose for the square comes from the 3.75" strip. The small side triangles are from the 4.75" strip. The large triangle in the corner comes from the 7.5 x 8.5 rectangle. **



Sew the thinner dark strip to the wider light strip. Press towards the light (wide) strip.

Cut two sections that are 3.75" wide.

Arrange as shown below.



Sew together along the long edge, with fabric oriented as shown at the right.
Don't press yet.



Fold unit in half and mark the center of the long seam.
Clip fabric, just into the seam at this spot.

Now press towards the light fabric as shown. Note that you are pressing AWAY from whatever fabric you've chosen for your square.

It should be easy to see the corner where the seams cross.



Line the diagonal line of your ruler along the top edge of the unit. The edge of the ruler should cross over where the seams intersect. Draw a line along this edge.

Rotate unit and repeat to draw a second line through the corner off the other square. These will be your sew lines.

Place the unit on top of the 7.5 x 8.5 rectangle, right sides together, as shown. Sew on the 2 drawn lines, making sure to cross the intersections carefully.

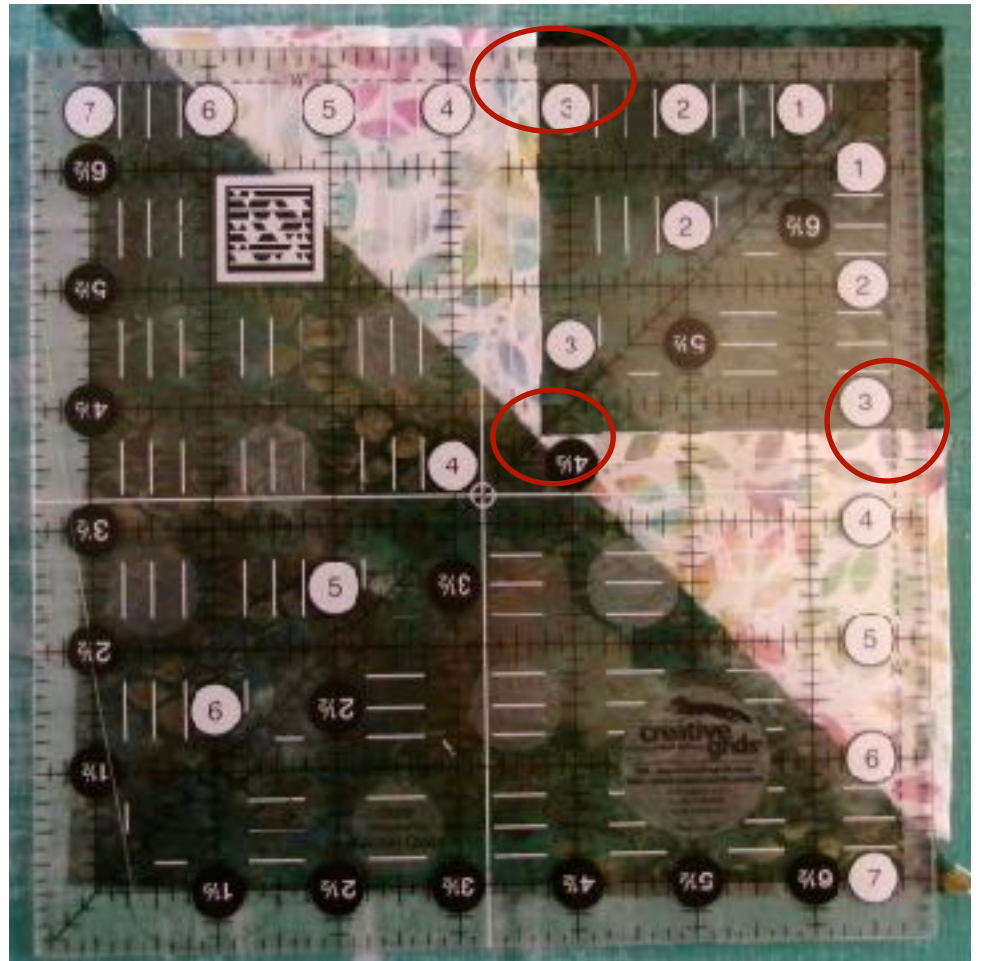
Check right side to make sure you are satisfied with how the point of the squares look.



Now cut BETWEEN the 2 drawn lines. Press towards the large triangle. You have 2 Shaded 4-patches ready to trim !

To trim, line the horizontal and the vertical 3.25" lines of the ruler along the seam lines of the square. The diagonal line should go through the corners of the small square.

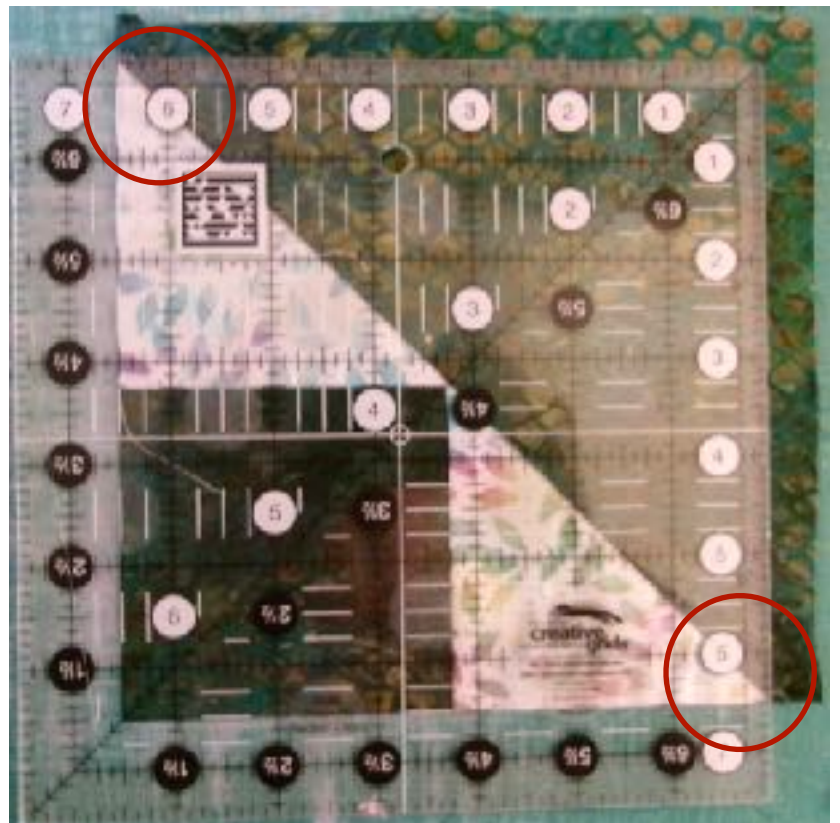
Trim along the top and side.



Rotate the unit 180 degrees. Line up the trimmed sides of the unit along the 6.5" lines of the ruler.

Again, the diagonal should go through the corners of the small square. Trim again along the top and side.

Repeat these steps with medium green pieces. You now have 4 Shaded 4-Patch units.



Step 2 - Center Unit

If using a solid square, skip on down to "Layout and Assemble".

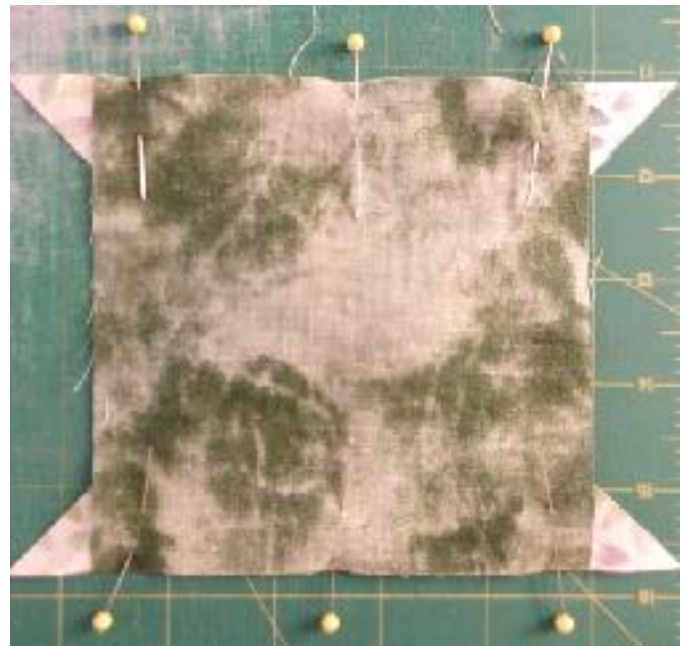


If making the center with 2 snowballed corners, use the pieces described in "Cutting". If you are not familiar with making "Stitch & Flip" corners, please contact me or check out this video from Chatterbox Quilts

<https://www.chatterboxquilts.com/blog/stitch-and-flip-blocks>

If making the Square in a Square, the next section is for you :)

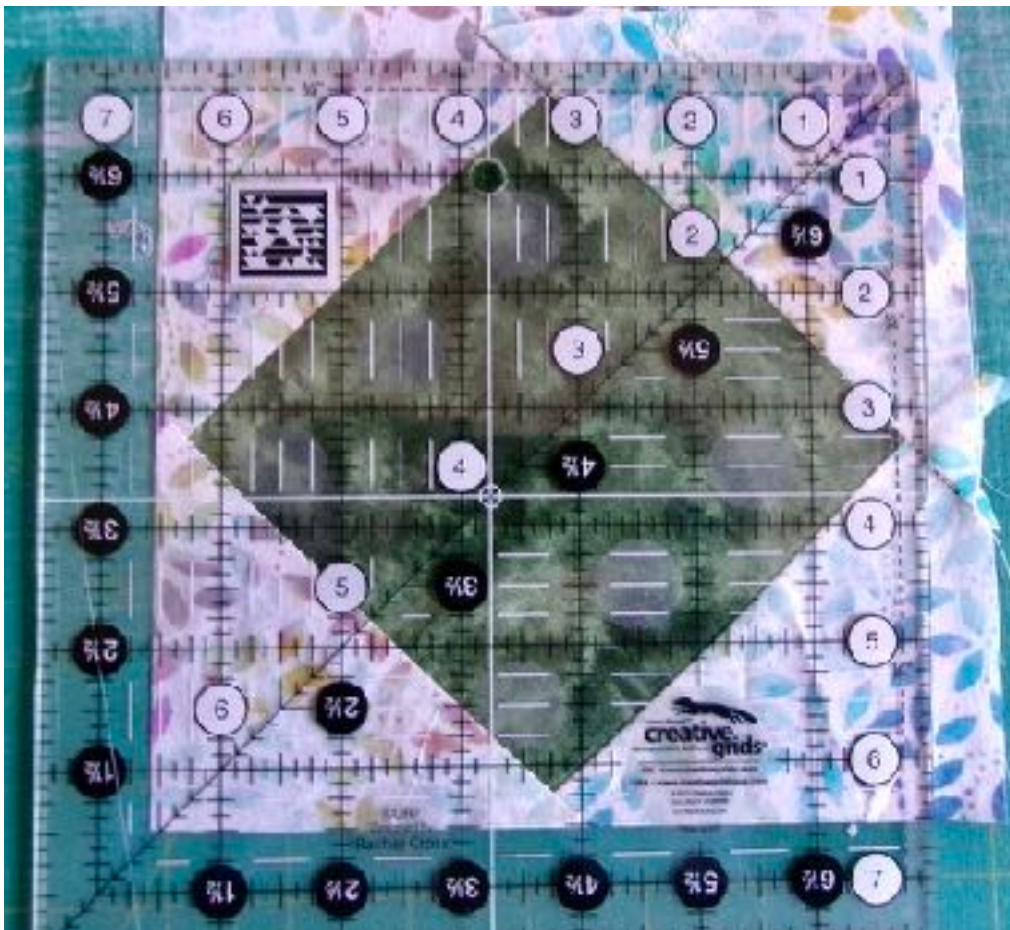
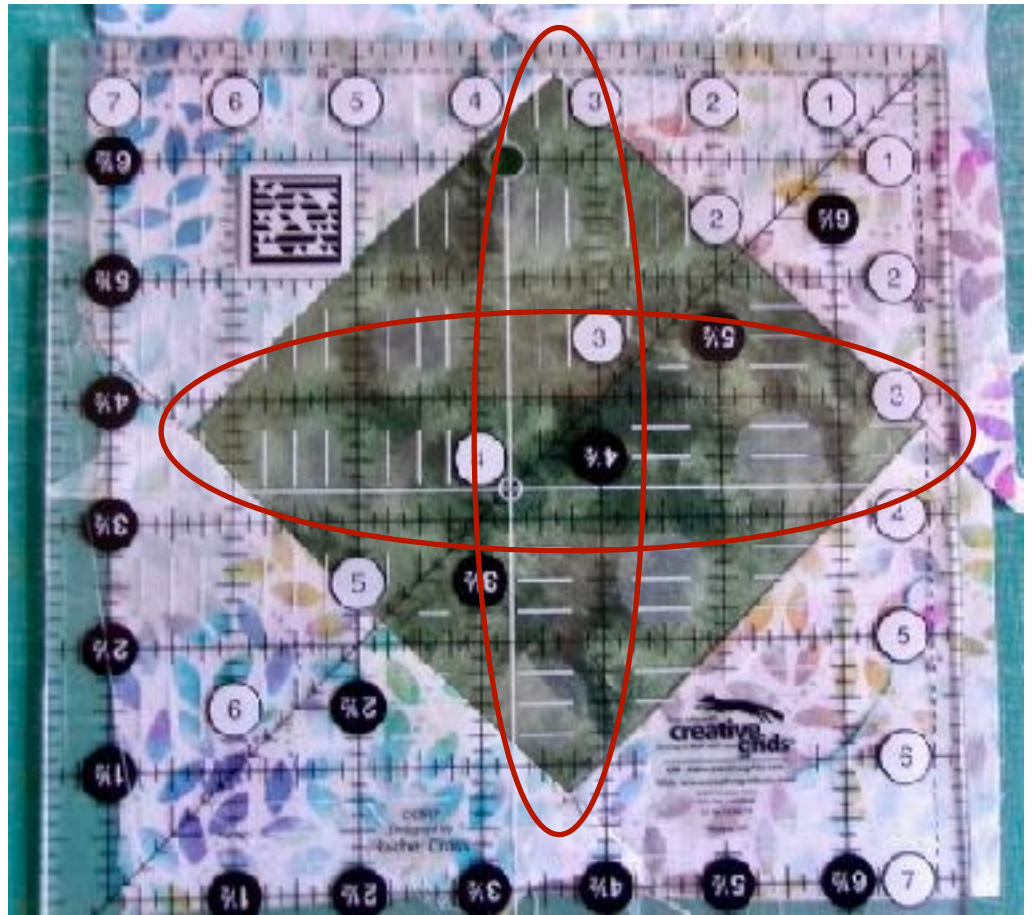
Cut the two 4.5 print squares on the diagonal to make a total of 4 triangles. Center and pin the triangles to opposite sides of the 4 & 7/8 med. green square. Sew with the square on top. Press towards triangles.



Center and pin remaining triangles to sides of the square. Sew & press towards the triangles.

Turn over and press flat.

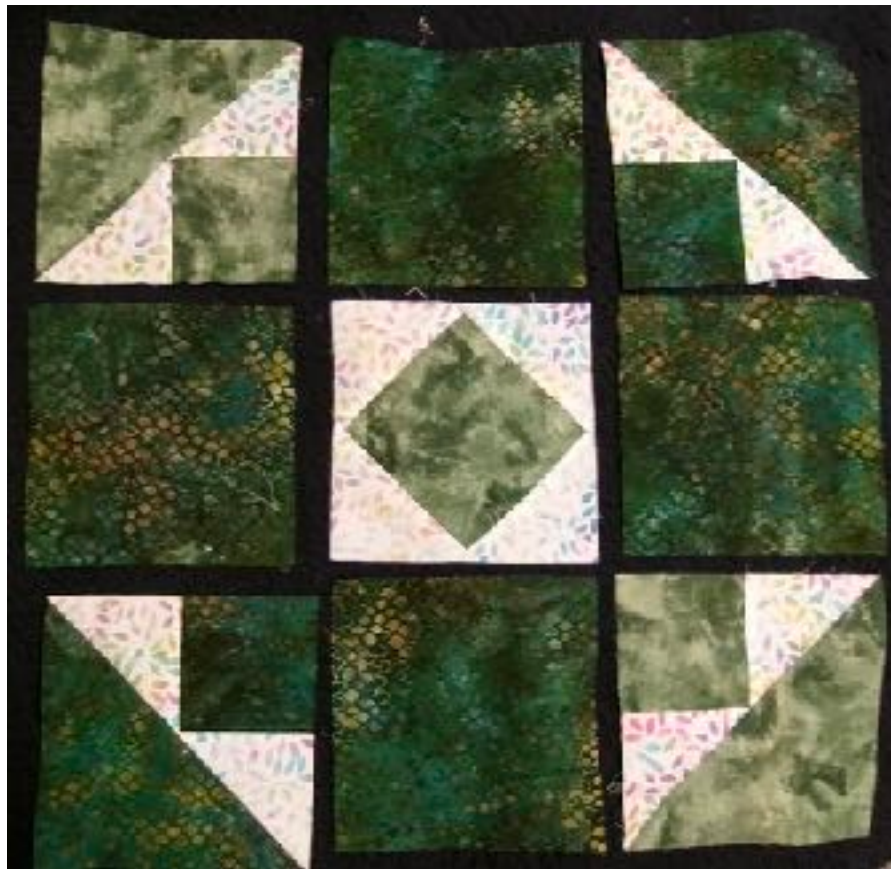
Line up the horizontal and the vertical 3.25" lines of the ruler with the corners of the green square. Come as close as you can. Your ruler should extend 1/4 inch beyond the point of the green square. Trim top and side of the unit.



Rotate the unit 180 degrees, align trimmed side of unit along 6.5" lines of the ruler on left and bottom and trim again.

Step 3 - Layout and Assemble

Lay out pieces as shown and sew together as a 9-patch.



If sewing the Square/
Square unit in the center,
pay close attention to the
points on the green
square. Your seams
should go through or just
a thread outside of the
points.

Press it all flat and that's
it !

August BOM is finished.

